

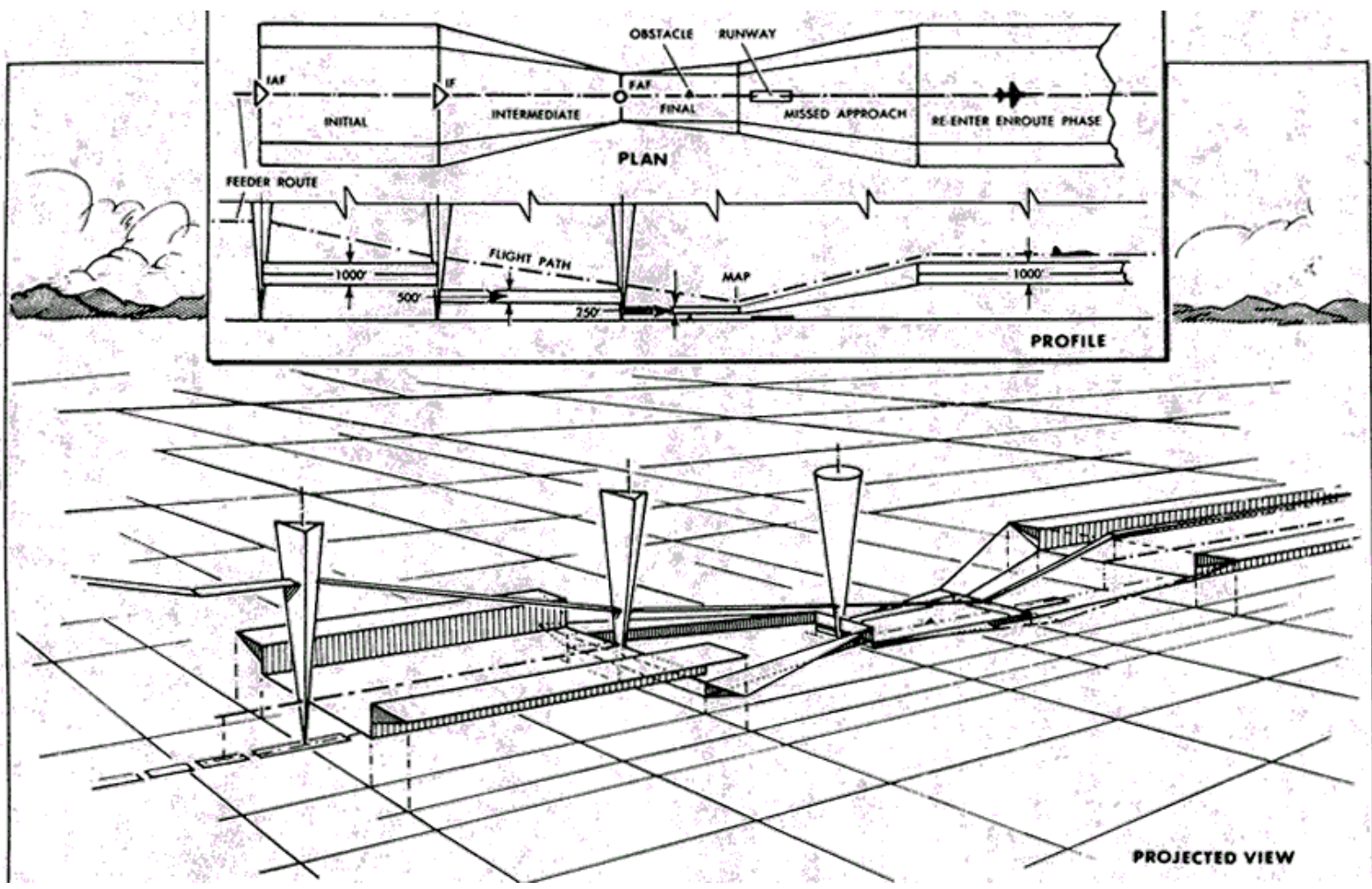
# Procedure Turns

*Ed Williams*

SMXGIG 2001

# IFR approaches are designed with four segments

SMX  
2001



Initial -> Intermediate -> Final -> Missed

The initial approaches feed the intermediate segment from the IAFs.

---

SMX  
2001

- Published NoPT routes
- Radar Vectors
- Procedure turns
- Other reversals

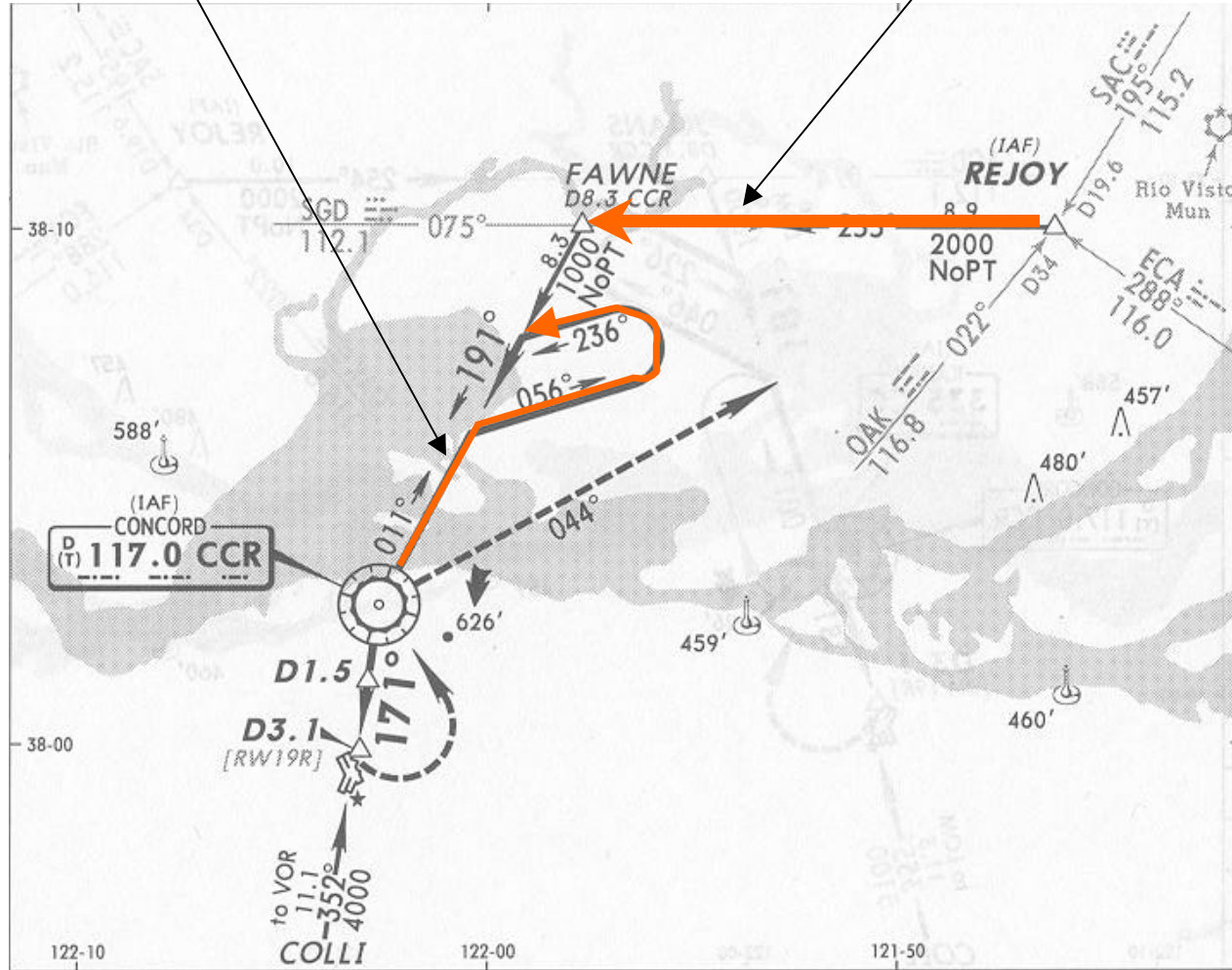
The different procedures accommodate arrivals from different directions and altitudes.

# CCR VOR 19R - plan view

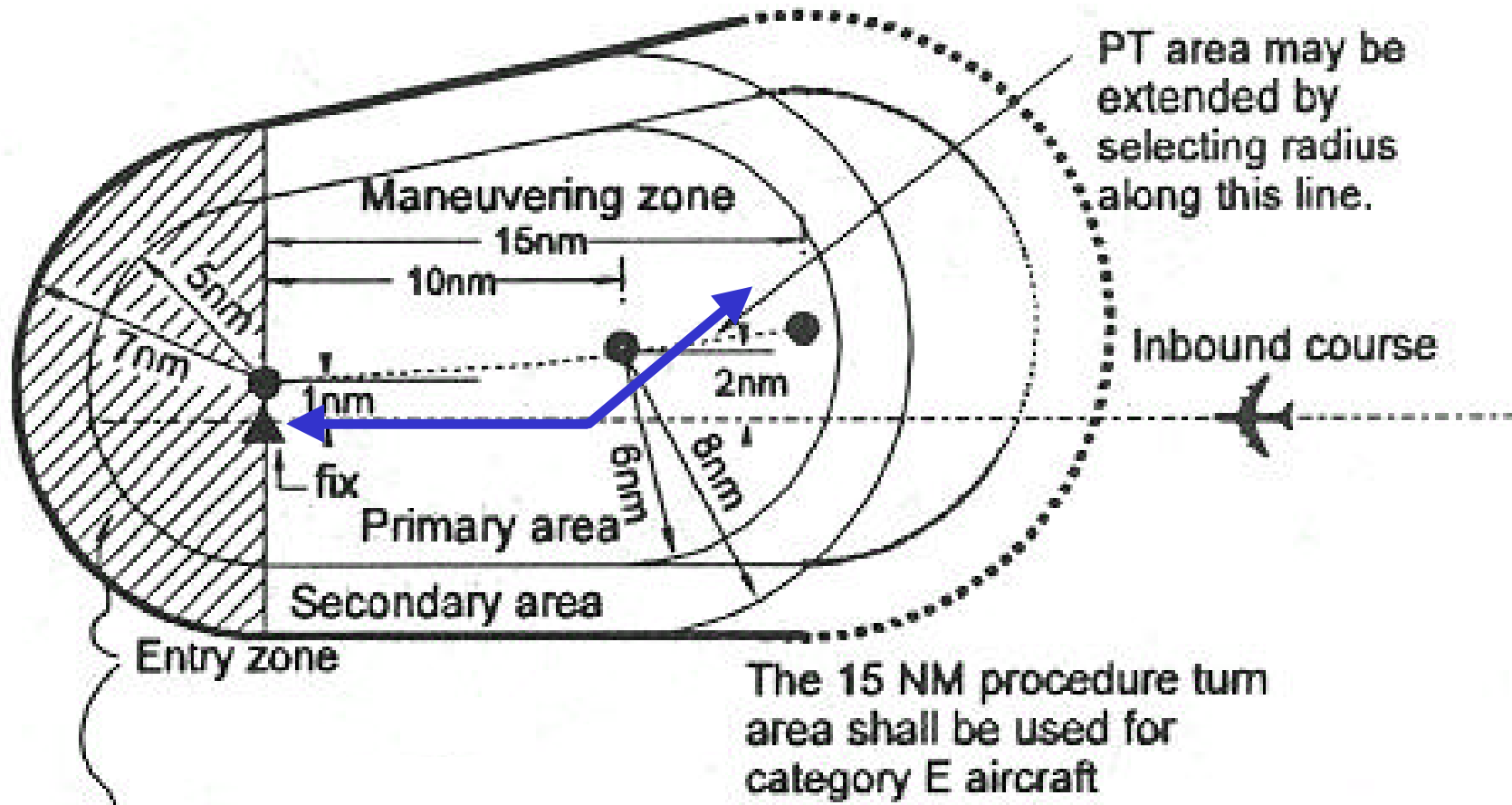
SMX  
2001

P. Turn from  
CCR

Published initial  
from *REJOY*



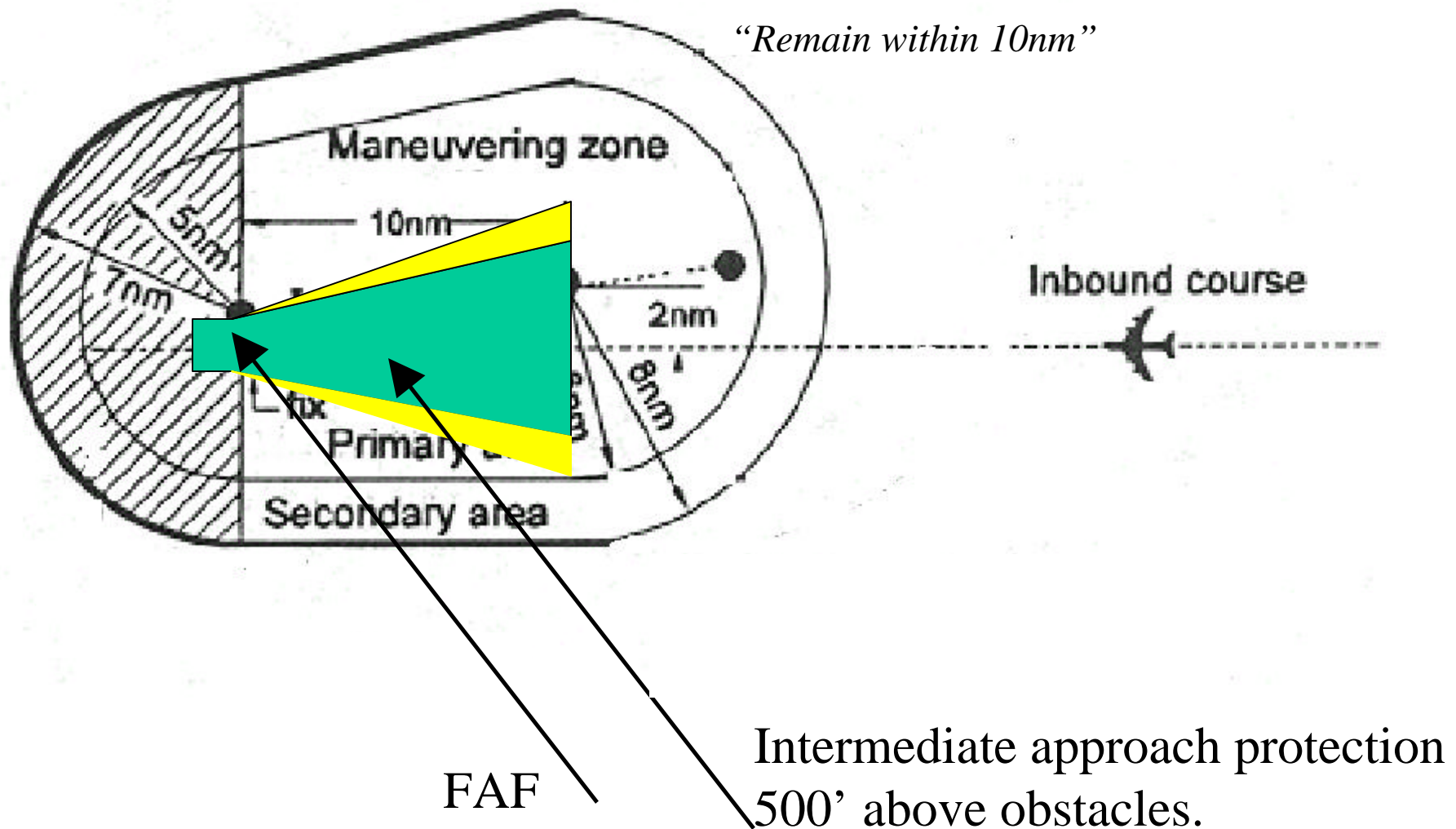
Protected airspace for a procedure turn.



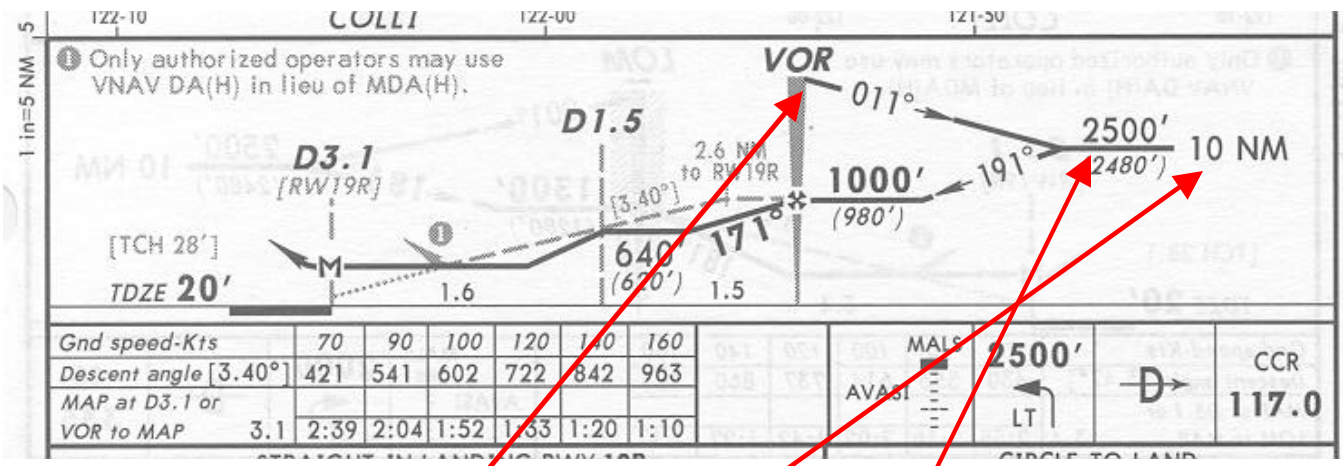
1000' clearance in primary area

Example intermediate segment - PT fix is FAF.

SMX  
2001



The details of the procedure turn are at the pilot's discretion



Start at PT fix

Remain with 10 (5, 15) nm

Maneuver on the protected side

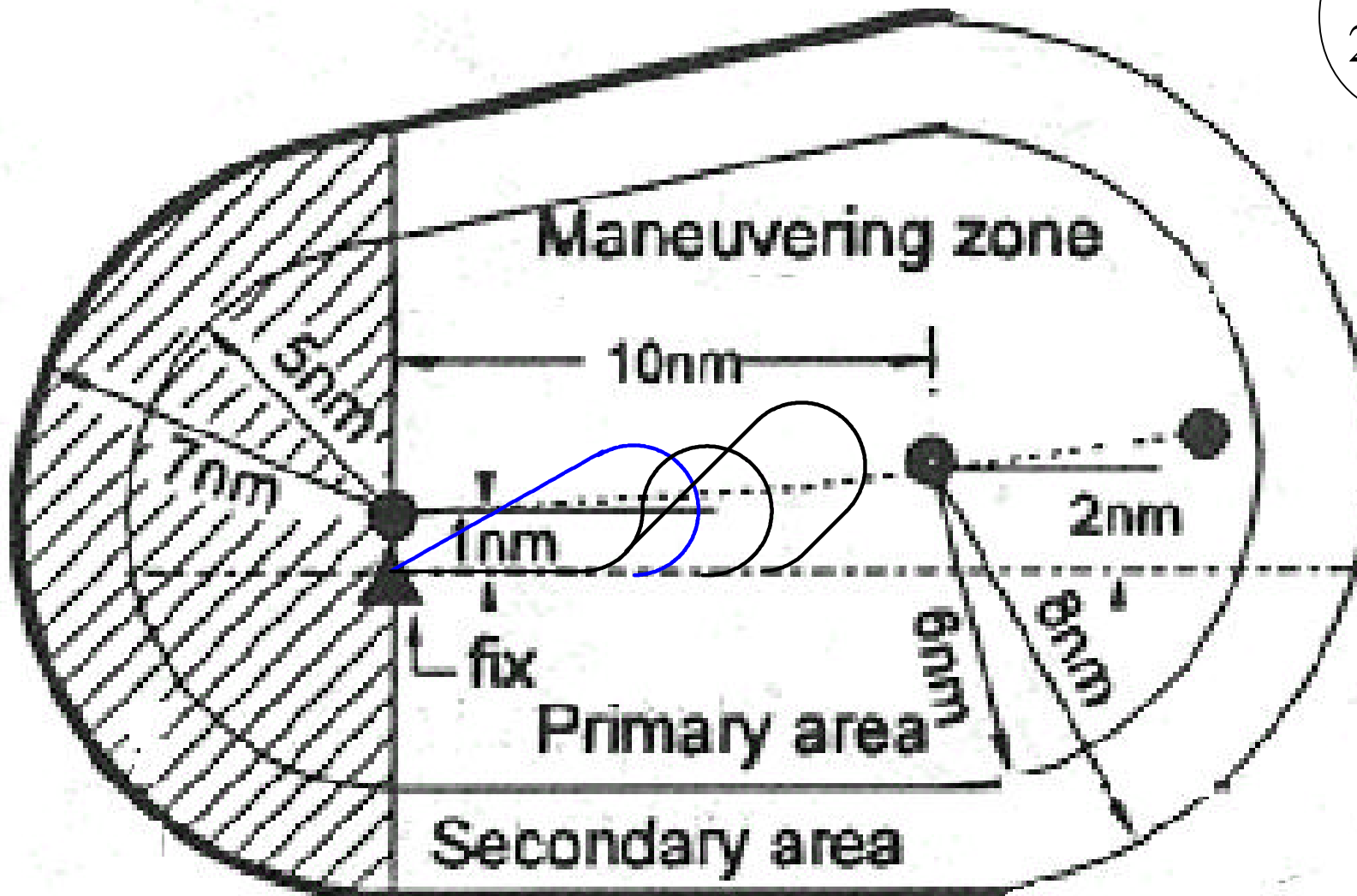
Speed <= 200 kts

Remain at or above the PT altitude until established on the intermediate course.

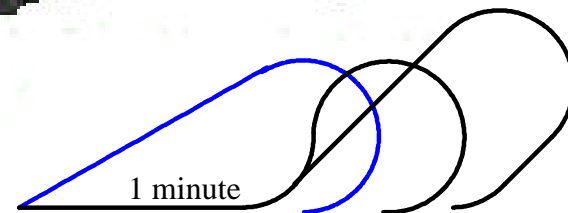


# Three PTs at 180 knots- no wind.

SMX  
2001



Teardrop, 90/270 and "NOS" PTs.





Which PT to use?



Am I ready?

How much altitude needs to be lost?

Where's the wind from?

Was my clearance delayed?

# VOR 26L ELP

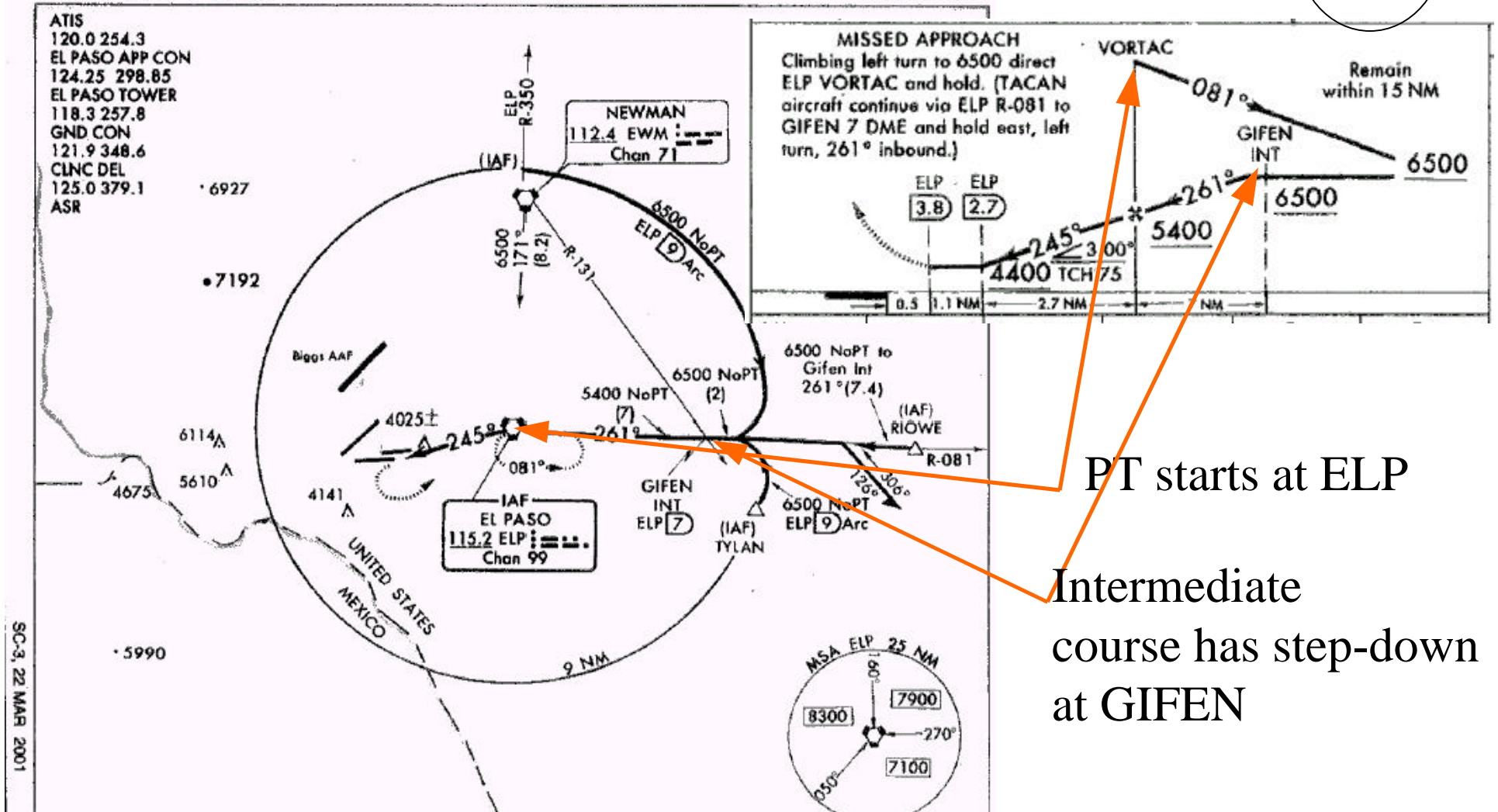
SMX  
2001

Amdt 29C 00111

## VOR RWY 26L

AL-134 (FAA)

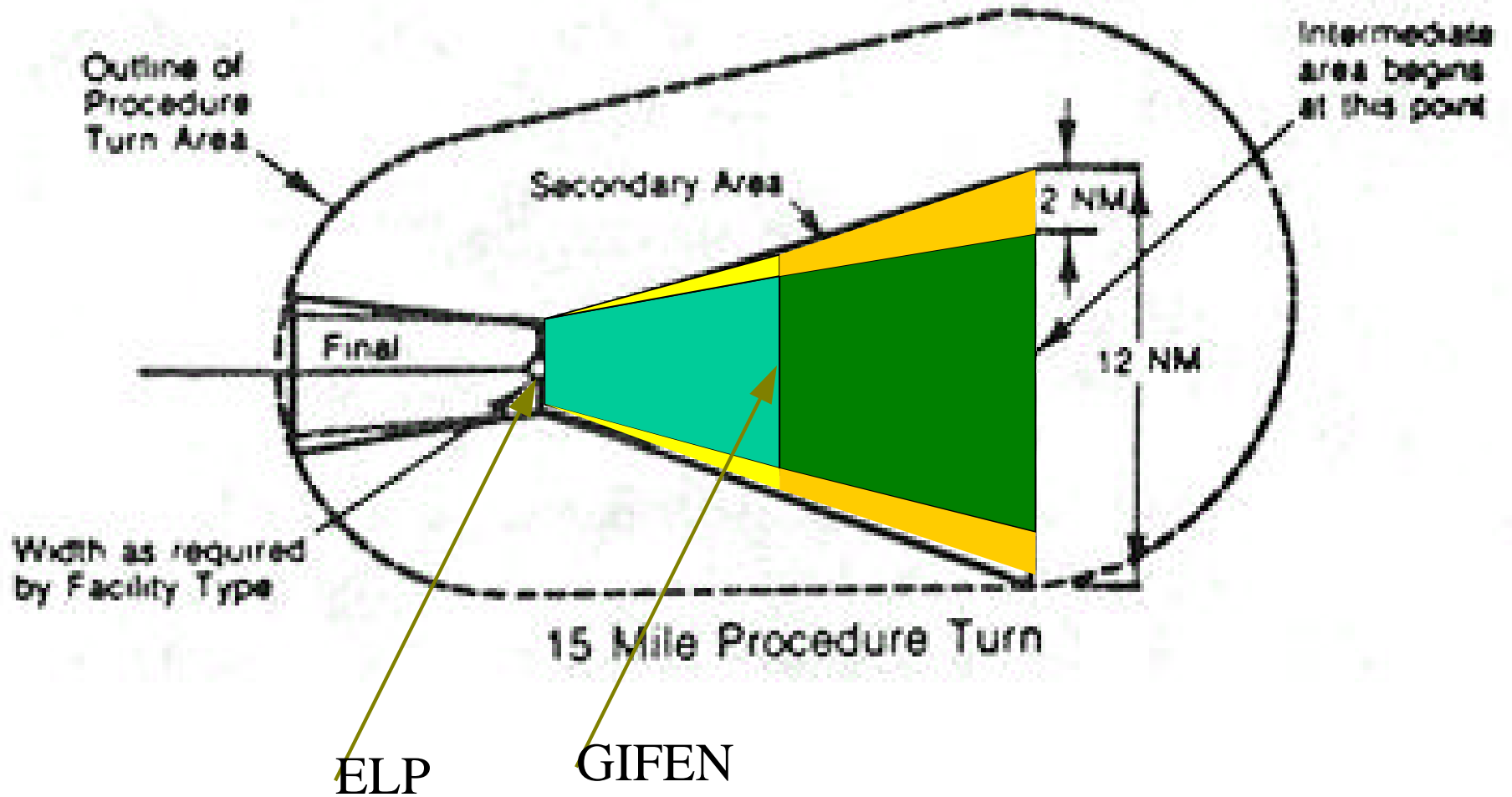
EL PASO INTL (ELP)  
EL PASO, TEXAS



PT does NOT have to go outside GIFEN before the turn inbound!

GIFEN is a step-down on the intermediate course.

SMX  
2001



## Having the GIFEN fix 7nm from ELP was contrary to TERPS

---

SMX  
2001

244(a)(3) When establishing a stepdown fix within an intermediate/initial segment underlying a PT area:

(a) Table 1A shall be applied.

(b) Only one stepdown fix is authorized within the intermediate segment that underlies the PT maneuvering area.

(c) The distance between the PT fix/facility and a stepdown fix underlying the PT area **shall not exceed 4 NM.**

(d) The MAXIMUM descent gradient from the IF point to the stepdown fix is 200 feet/NM. The MAXIMUM descent gradient from the stepdown fix to the FAF is 318 feet/NM.

!FDC 1/2628 ELP FI/T EL PASO INTL, EL PASO, TX.

VOR RWY 26L, AMDT. 29C ...

TERMINAL ROUTE NEWMAN (EWM) VORTAC TO EL PASO (ELP)

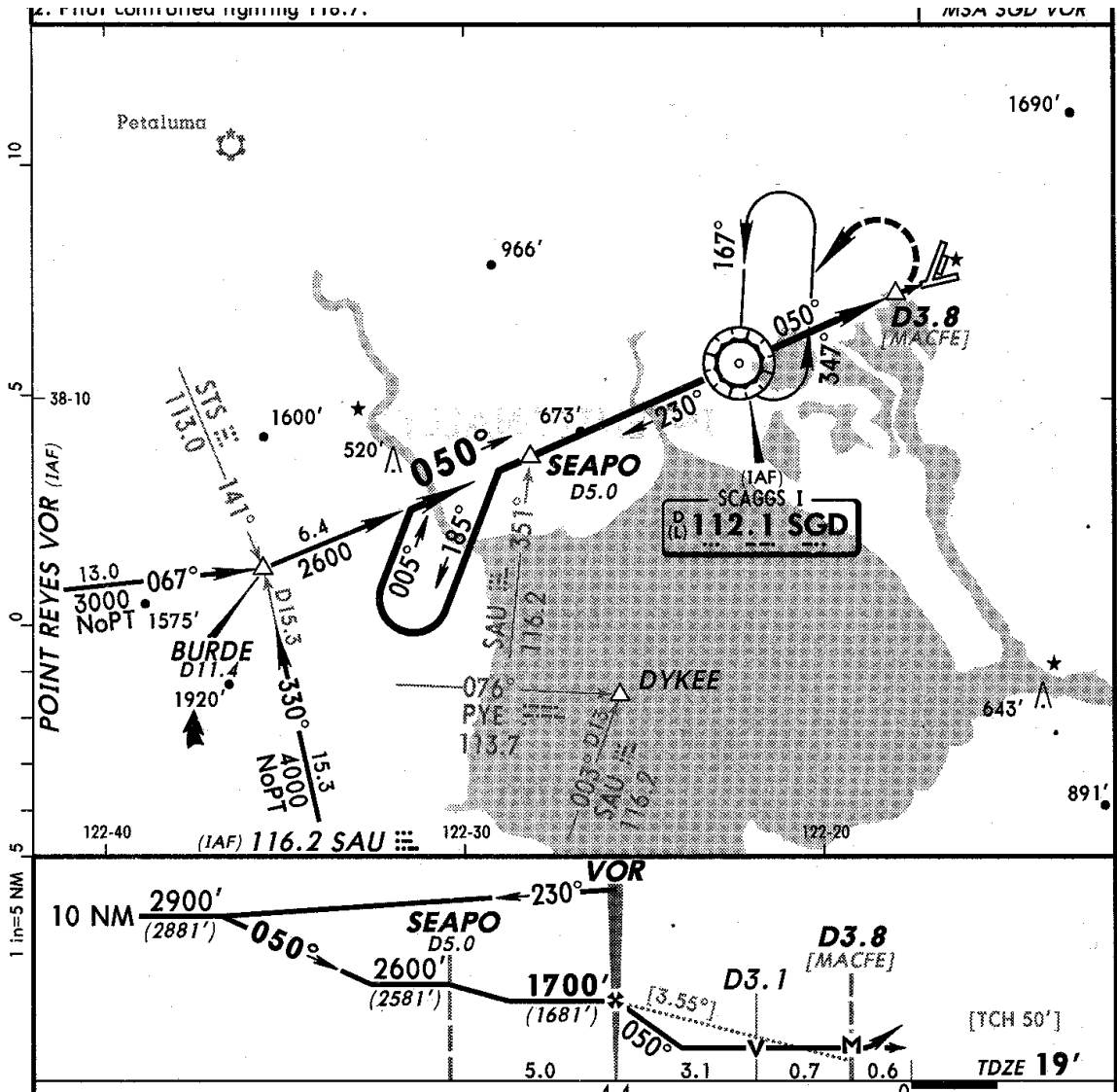
VORTAC NA.

PTN NA.

It's "an attractive nuisance". (*Wally Roberts*)

The PT must be performed within 10nm of SGI

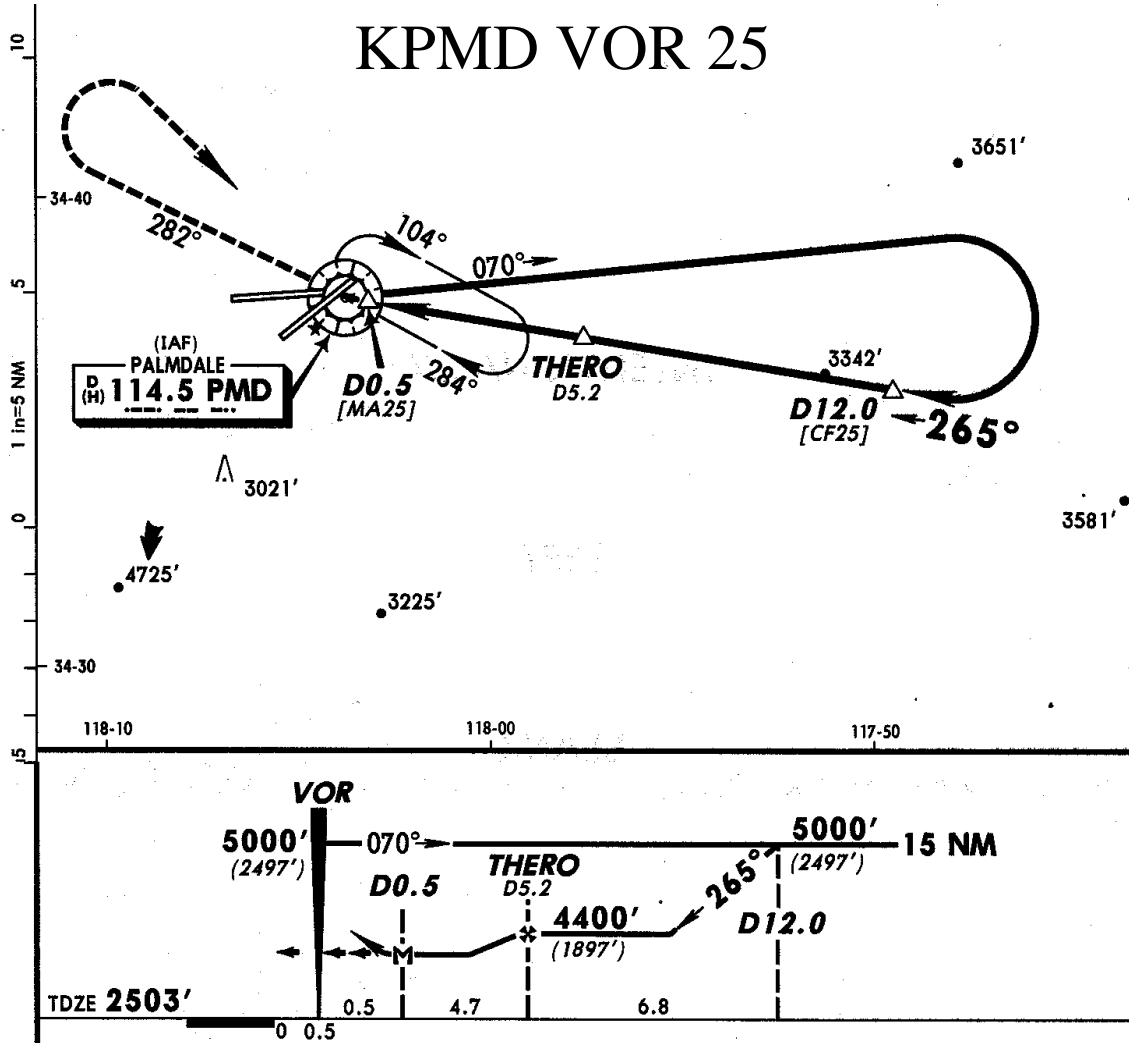
SMX  
2001



It may be commenced prior to SEAPO!

Here a teardrop PT is mandatory.

SMX  
2001

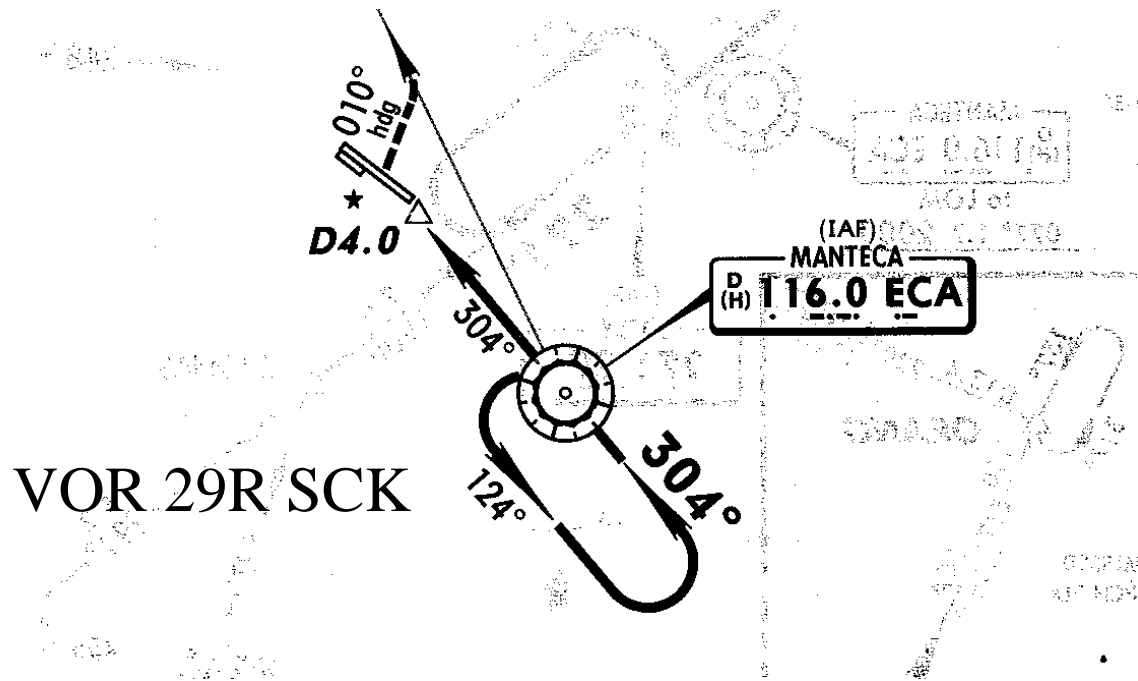


There is no requirement to turn inbound outside 12 DME!

You should turn outside THERO.

Course reversal by holding entry mandatory here.

SMX  
2001



Protected template is smaller than PT - but size is not readily determined.

Respect holding pattern speed limits.

